

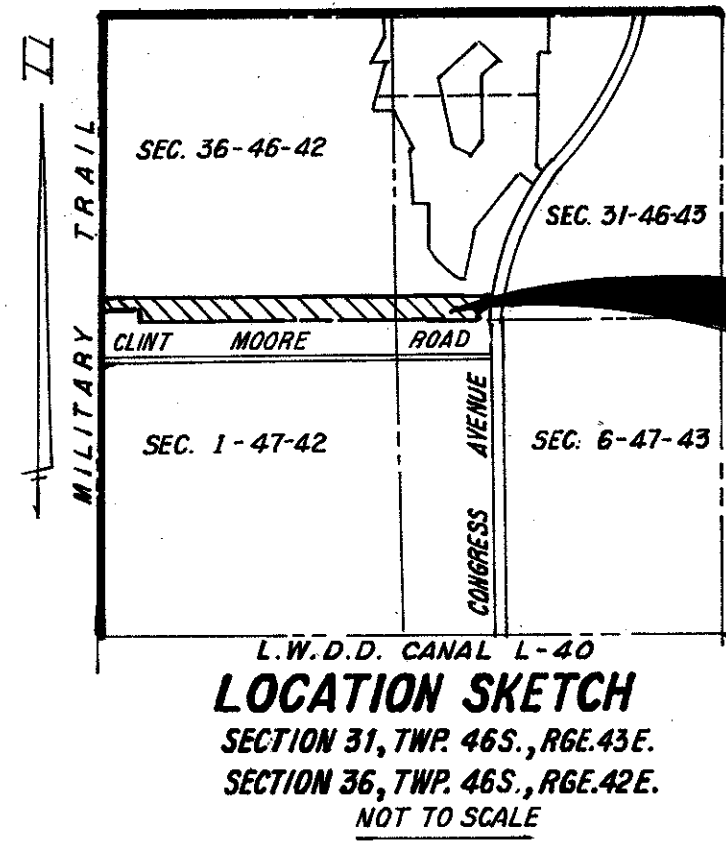
# BOCA GOLF AND TENNIS CLUB - SECTION 2

A PART OF PALM AIRE EAST P.U.D.  
A PLAT OF A PORTION OF SECTION 31, TOWNSHIP 46 SOUTH, RANGE 43 EAST AND A PORTION OF SECTION 36, TOWNSHIP 46 SOUTH, RANGE 42 EAST  
PALM BEACH COUNTY, FLORIDA

0285-002

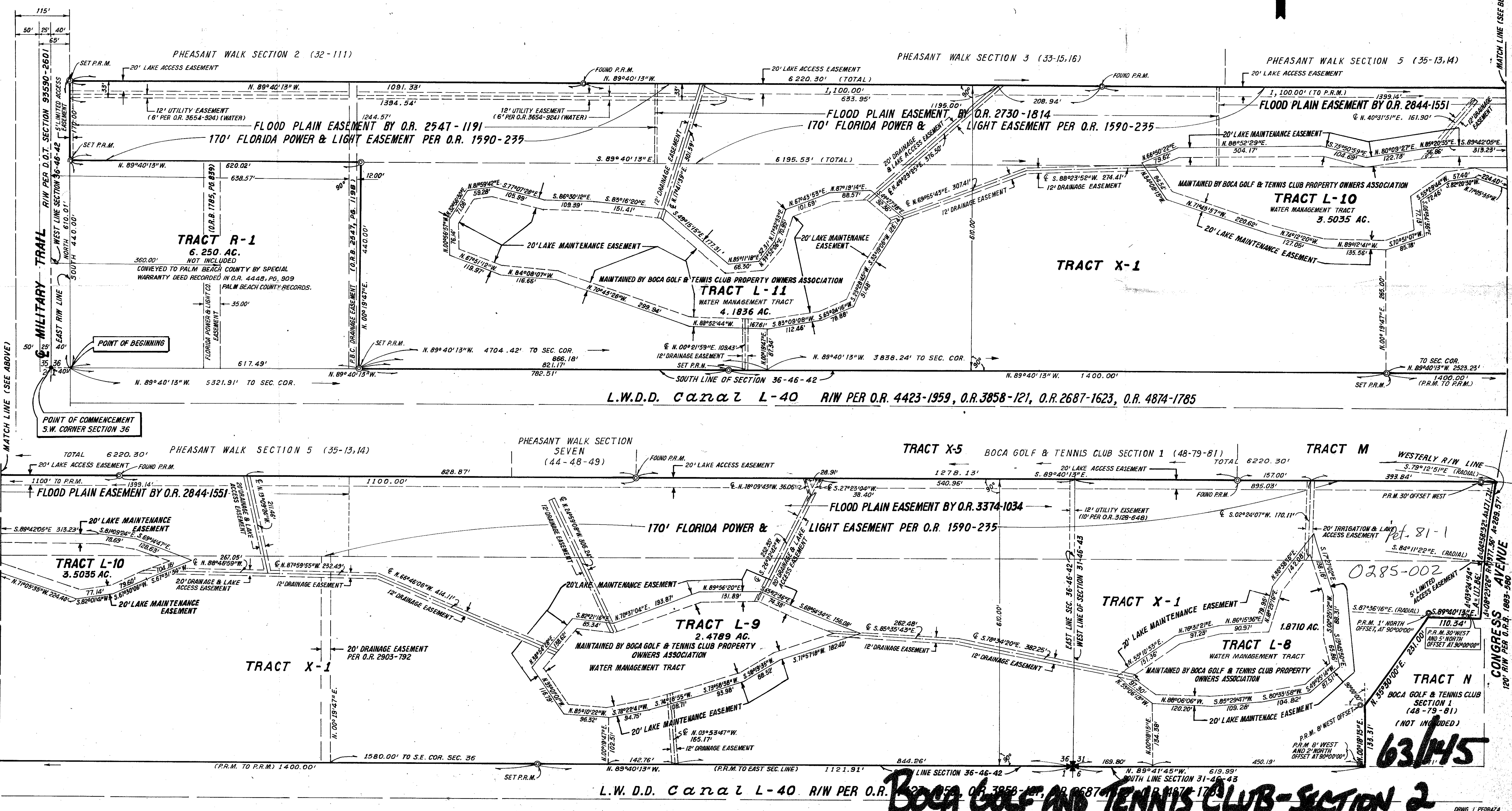
SHEET 2 OF 2

145



**THIS PLAT**

WINNINGHAM & LIVELY, INC. - SURVEYORS, ENGINEERS 1040 N.E. 45th STREET OAKLAND PARK, FLORIDA, 33334  
SCALE: 1" = 100' APRIL, 1989.



Boca Golf & Tennis Club  
 SUBDIVISION #0 Section 2  
 BOOK 63 PAGE 145  
 FLOOD ZONE A7-R FLOOD MAP #330B  
 QUAD # 22 ZONING FS 81-1  
 TAZ 593 ZIP CODE 33431  
 PUD MAKE Q. Part of Palm Aire East P.U.D.

0285-002

63/145

L.W.D.D. Canal L-40 R/W PER O.R. 4423-1959, O.R. 3858-121, O.R. 2687-1623, O.R. 4874-1785

BOCA GOLF AND TENNIS CLUB - SECTION 2

DRWG. L. PEDRAZA